



Make Your Own Emotion Monster!

A fun leaf craft to show how your monster feels today

Share your masterpiece by tagging us:



hapeUK



hape_uk

4-5
years

Learning Benefits



Creative development



Fine motor skills



Language skills



Social skills



You will need:



Scissors



Colouring Pencils

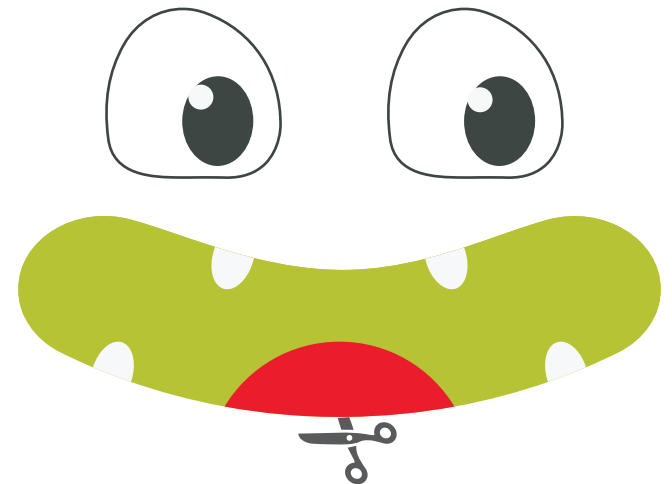
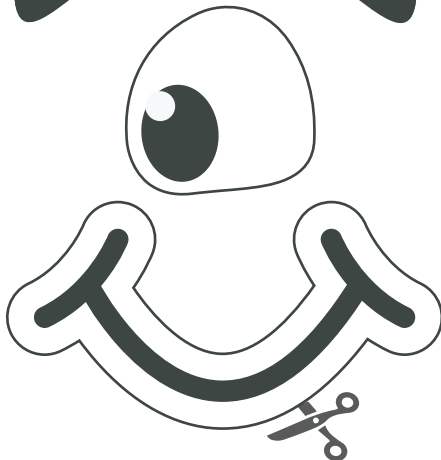
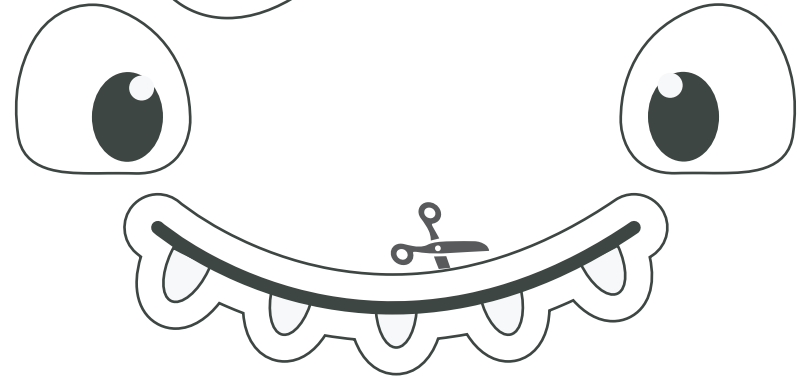
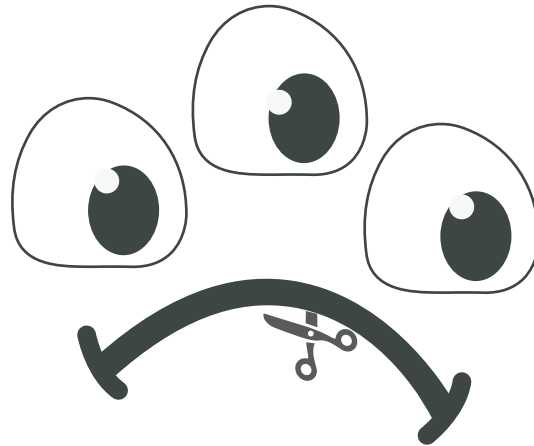
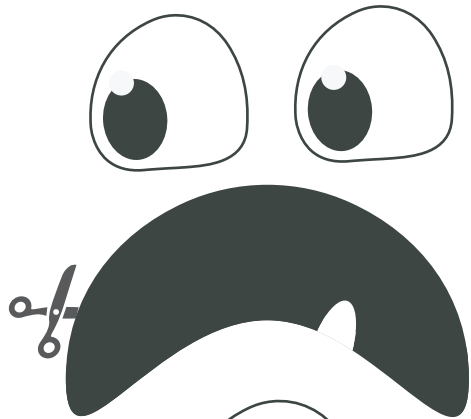
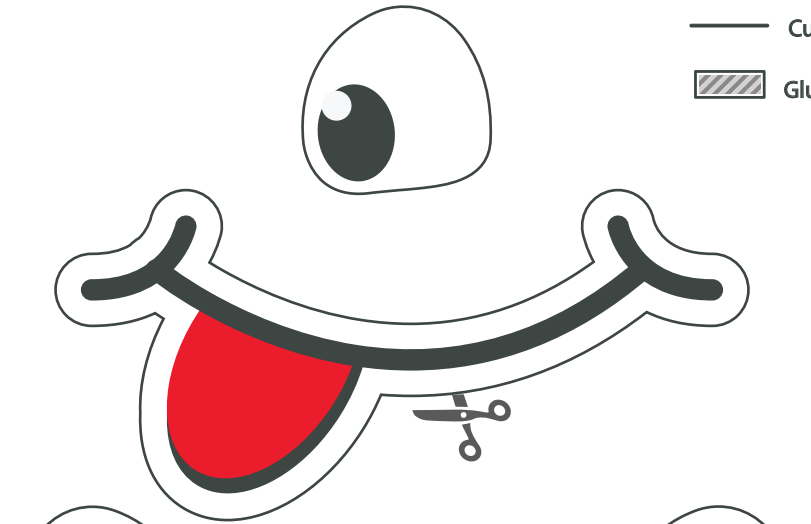
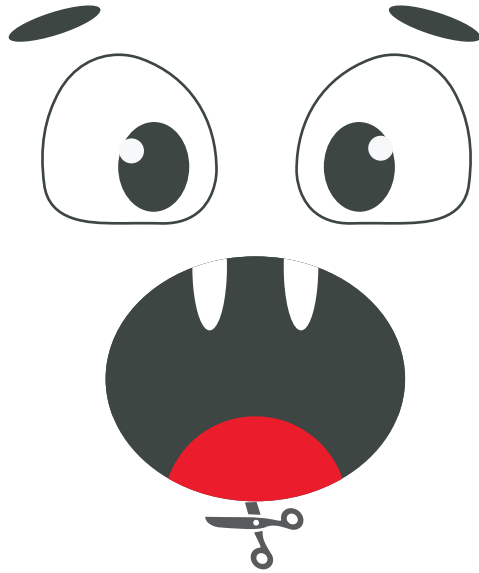
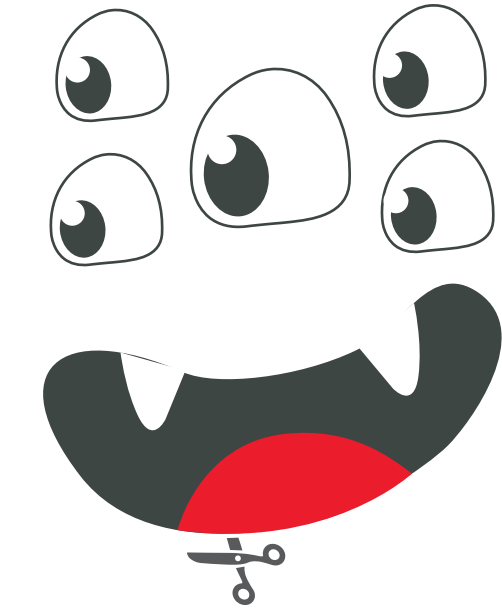


Glue



1h 30min

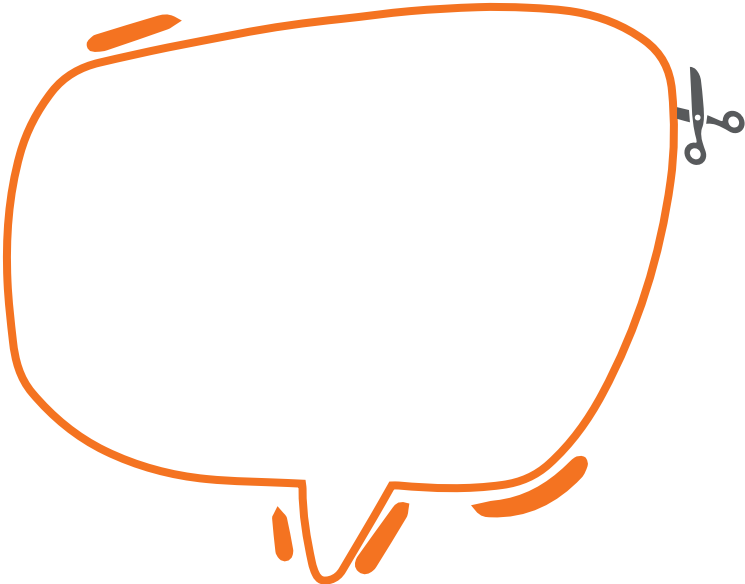
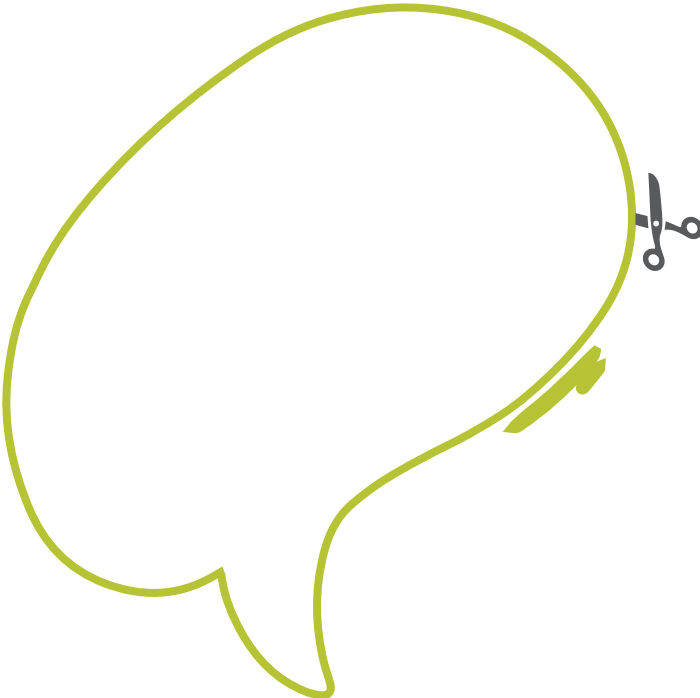
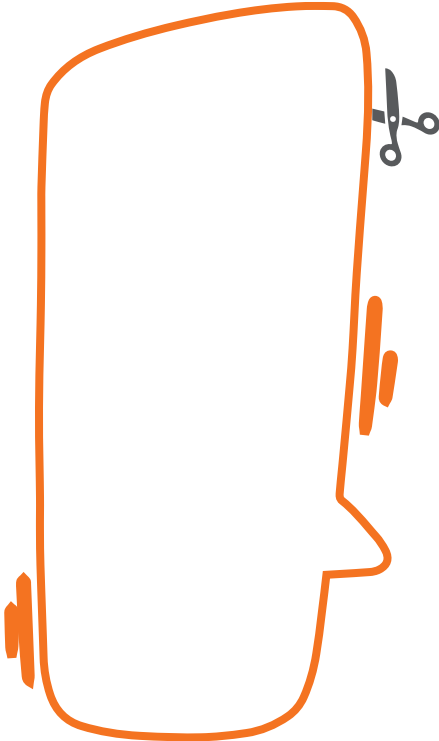
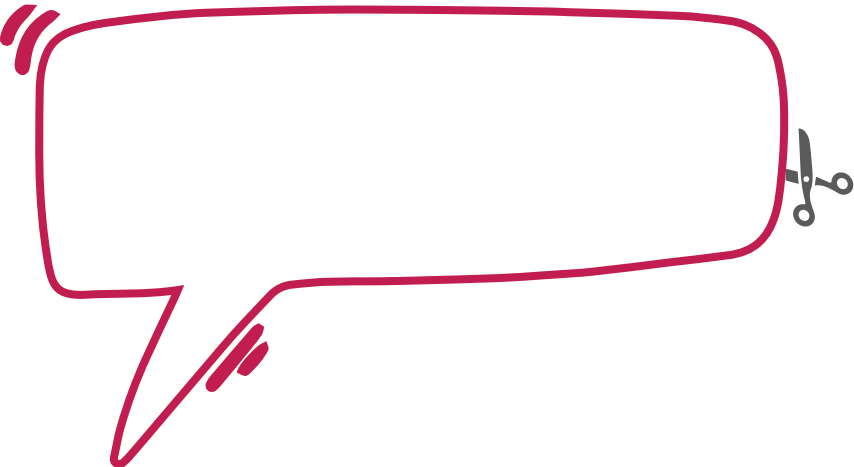
— Cut
▨ Glue

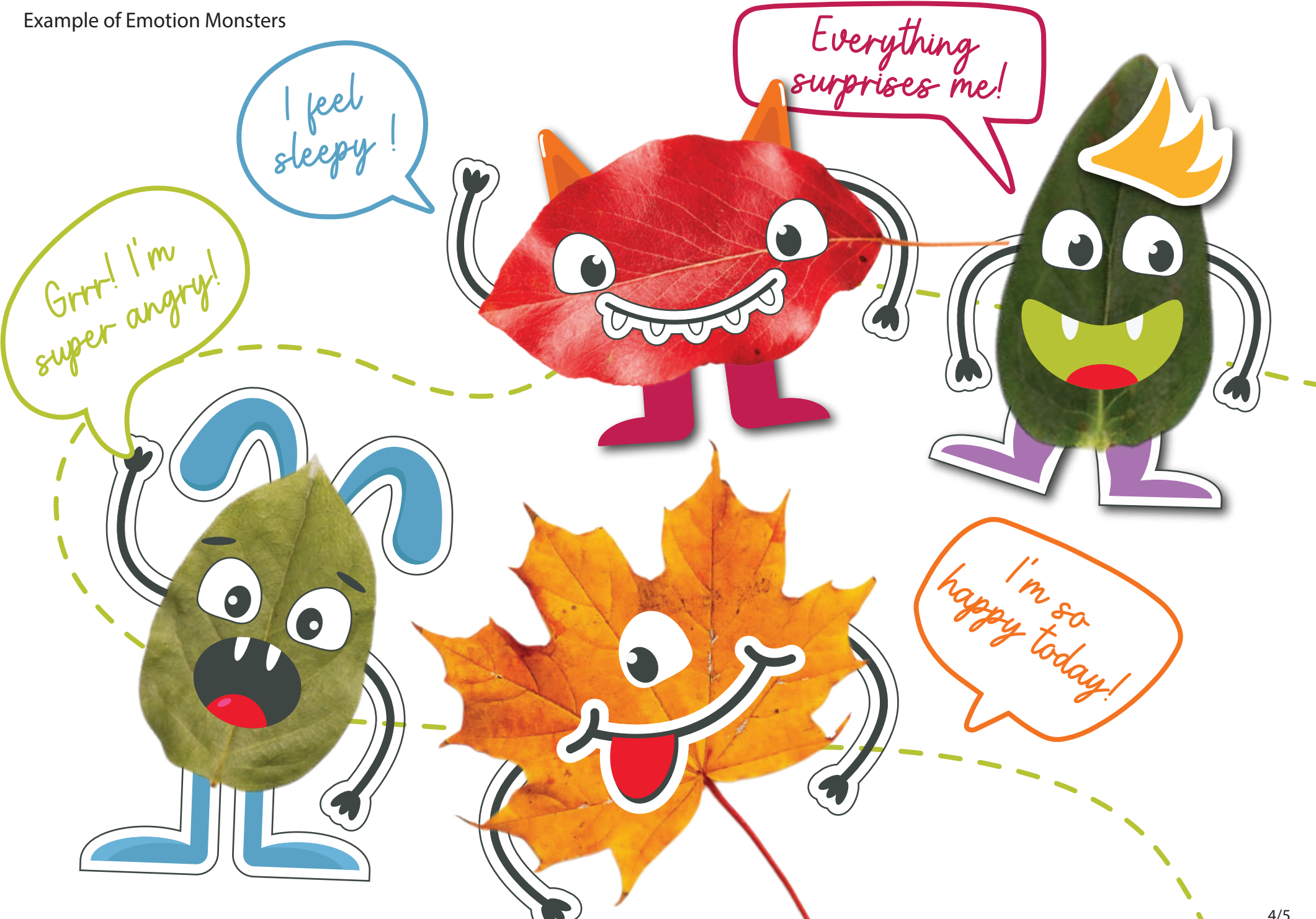




Cut out a speech bubble

— Cut
▨ Glue





Instructions:

1. Collect and dry leaves of different colours from your garden or a nearby park.
2. On the first page, cut out monster faces showing different emotions like happiness, sadness or surprise.
3. Cut out other fun elements such as hair, arms or decorations.
4. Cut out a speech bubble and write what your favourite monster is feeling today.
5. Use all the pieces you've collected to create your own Emotion Monster portrait card!