



Winter Town Scenes

Create, colour and construct your own wintery landscape!

Share your masterpiece by tagging us:



hapeUK



hape_uk

5-6
years

Learning Benefits



Creative development



Fine motor skills



Problem solving



You will need:



Colouring Pencils



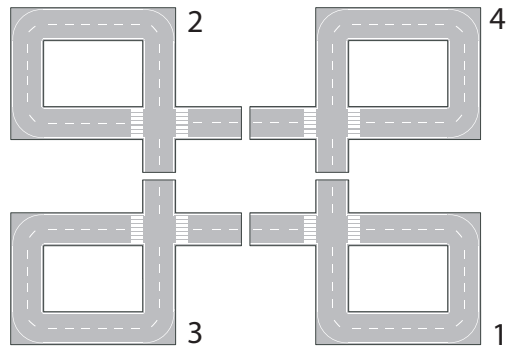
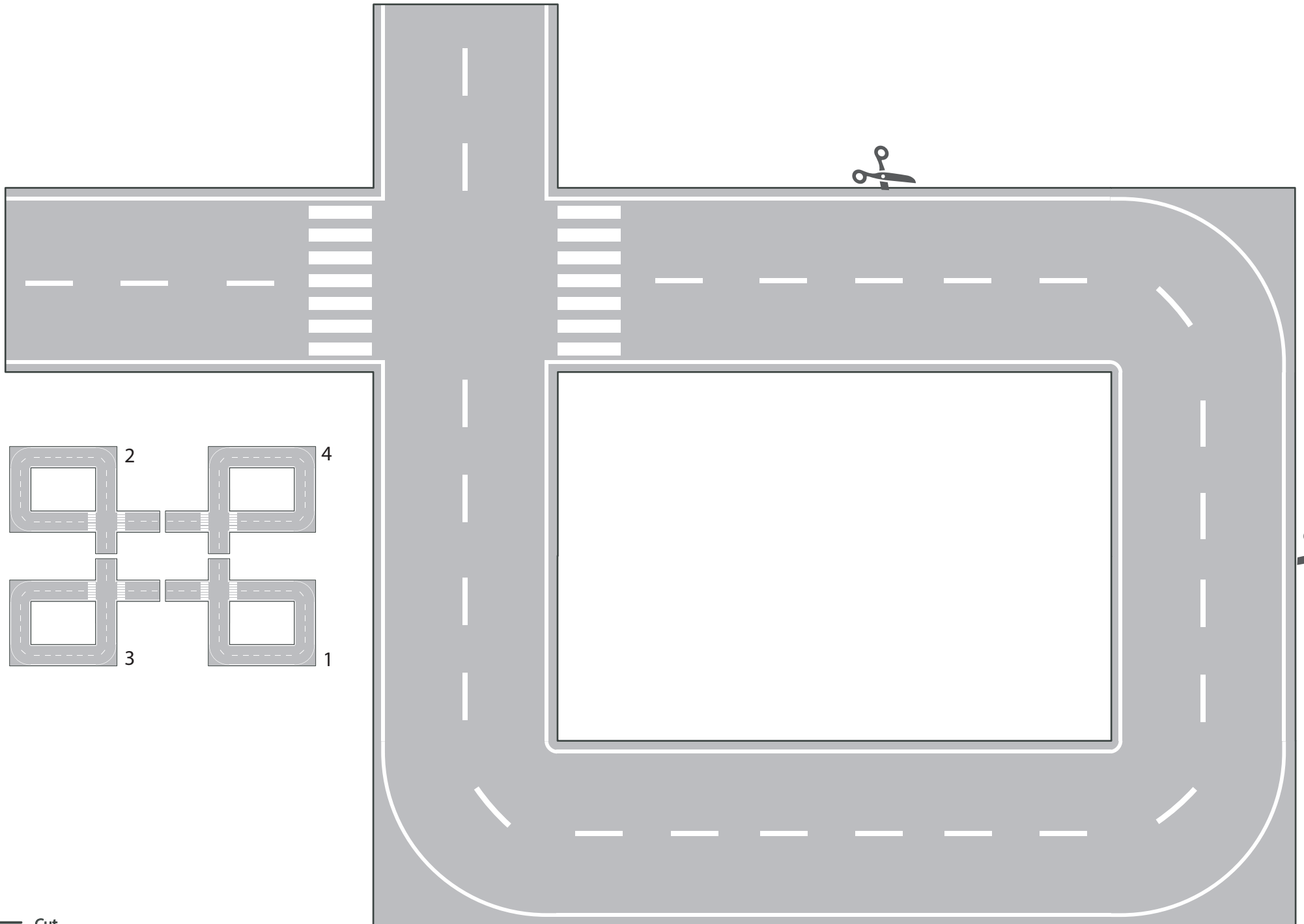
Scissors



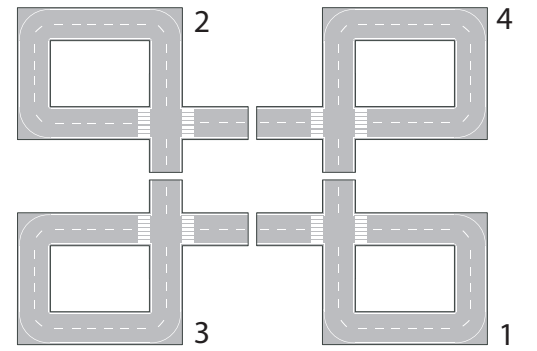
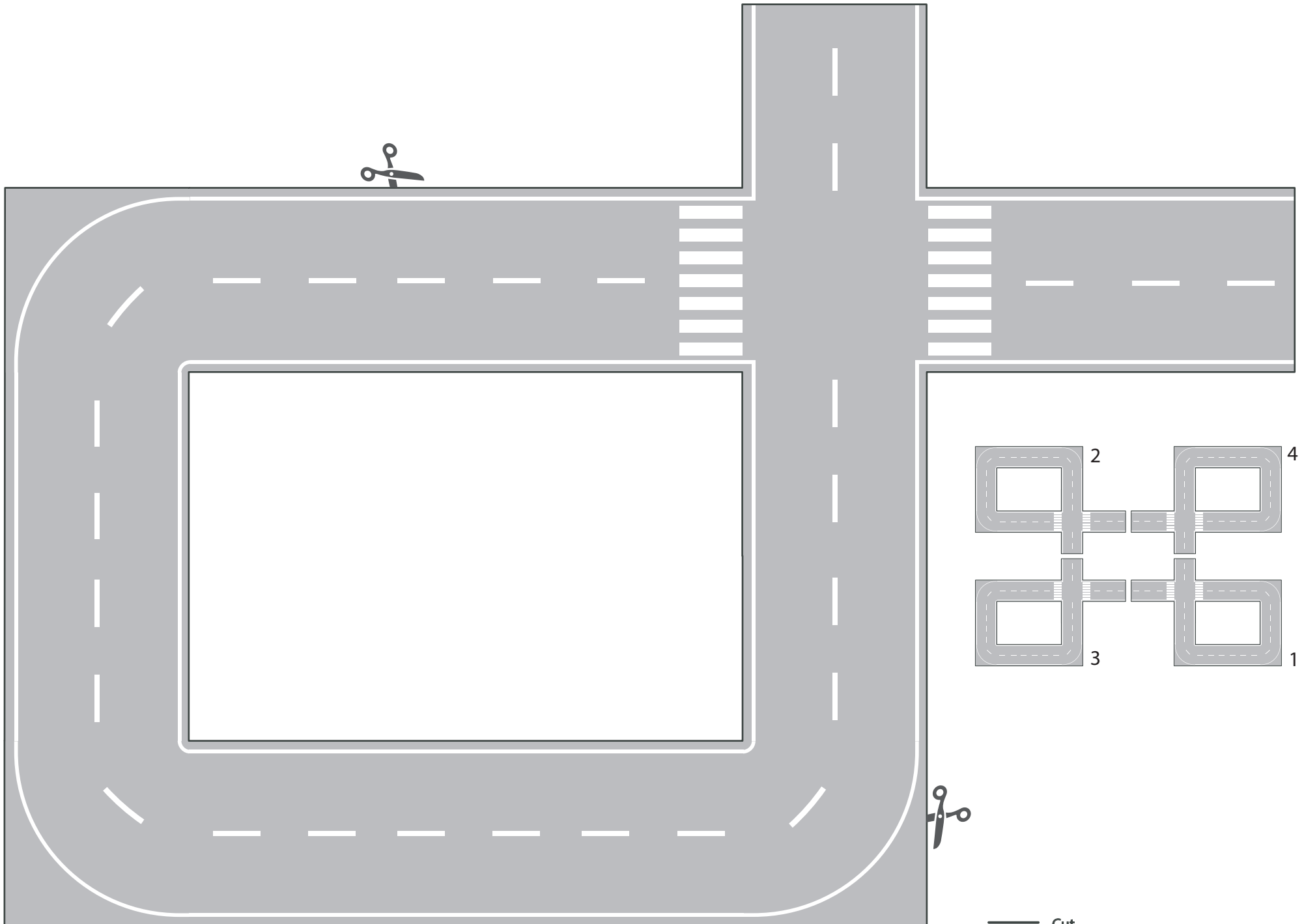
Glue



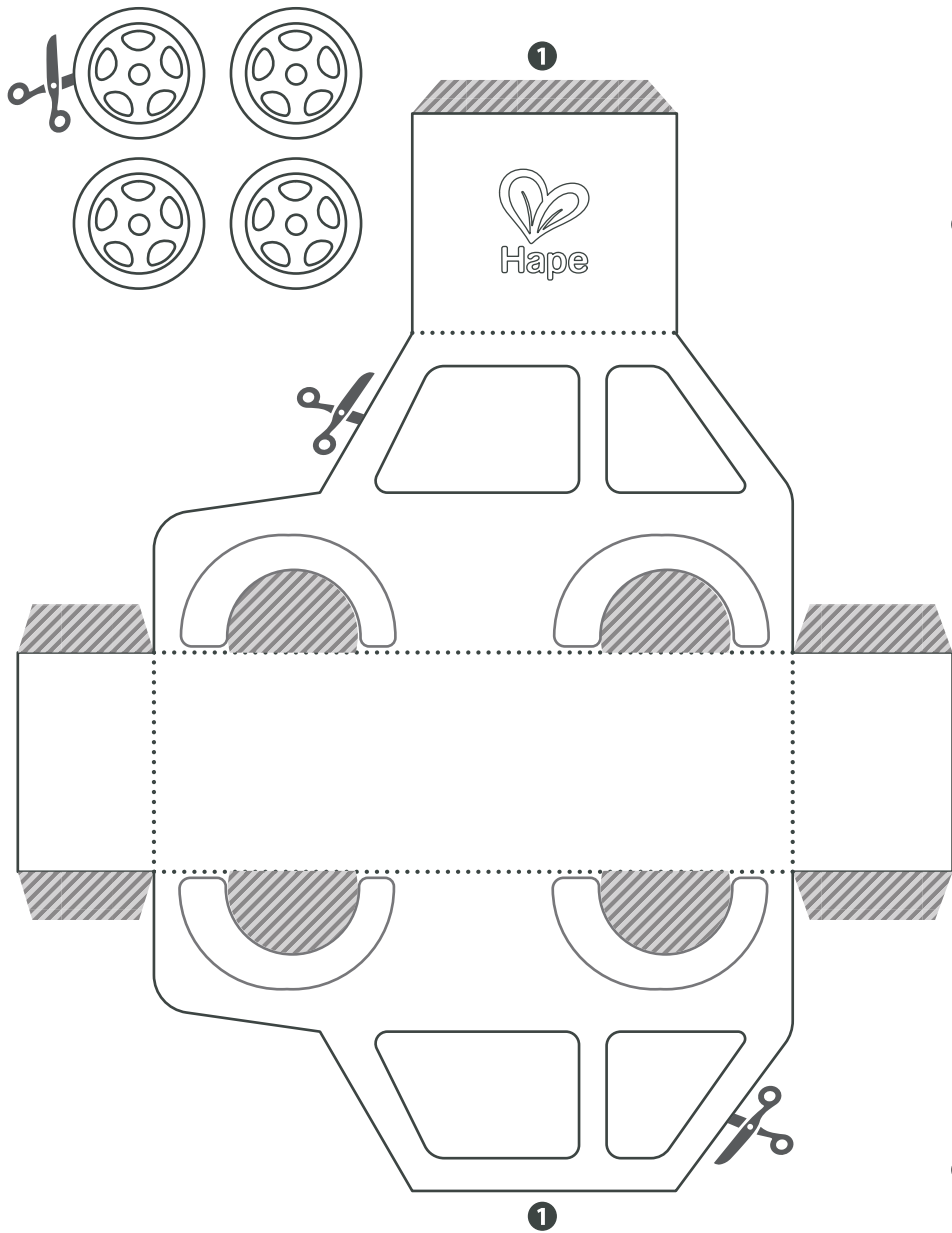
1h 30min







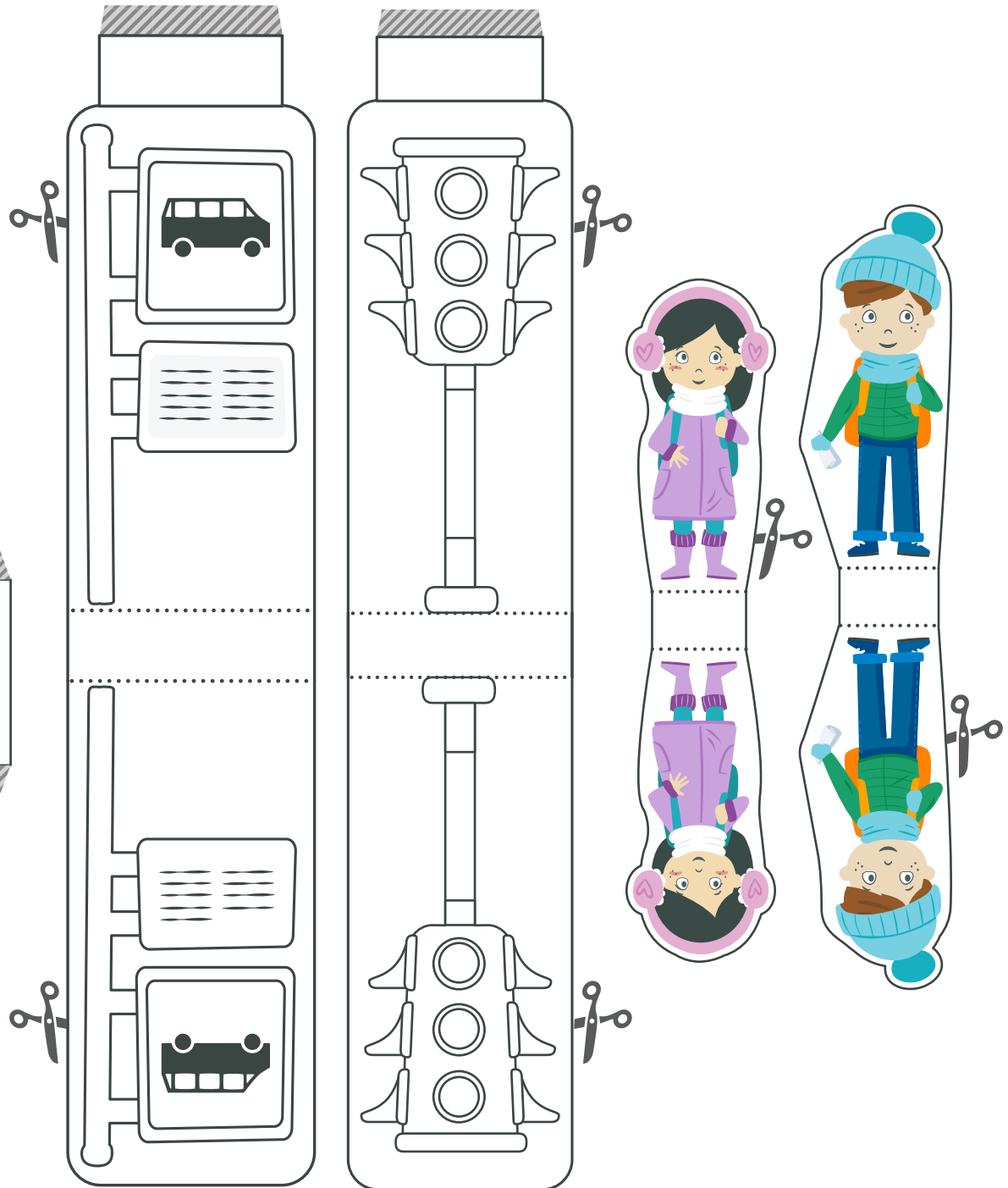
— Cut

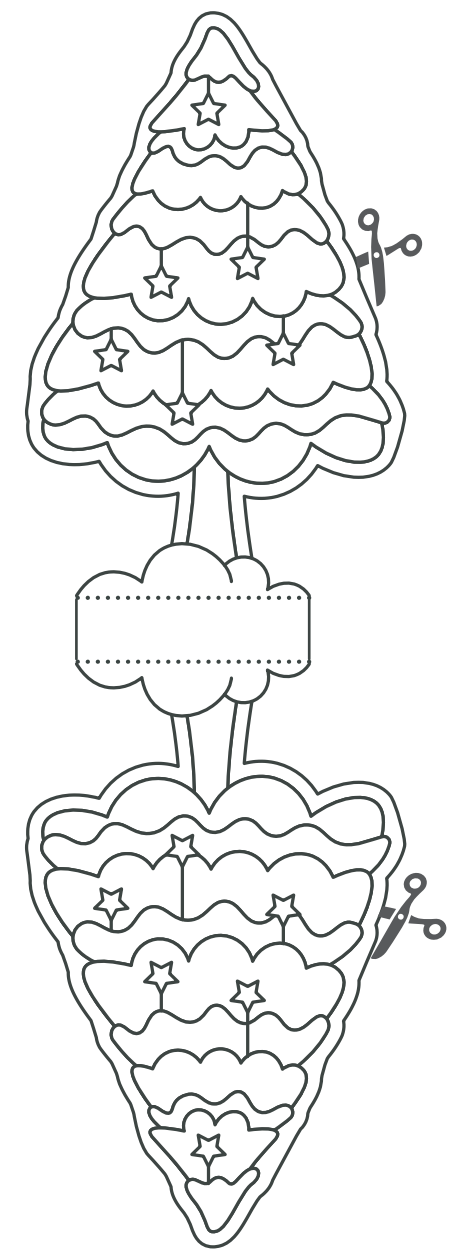
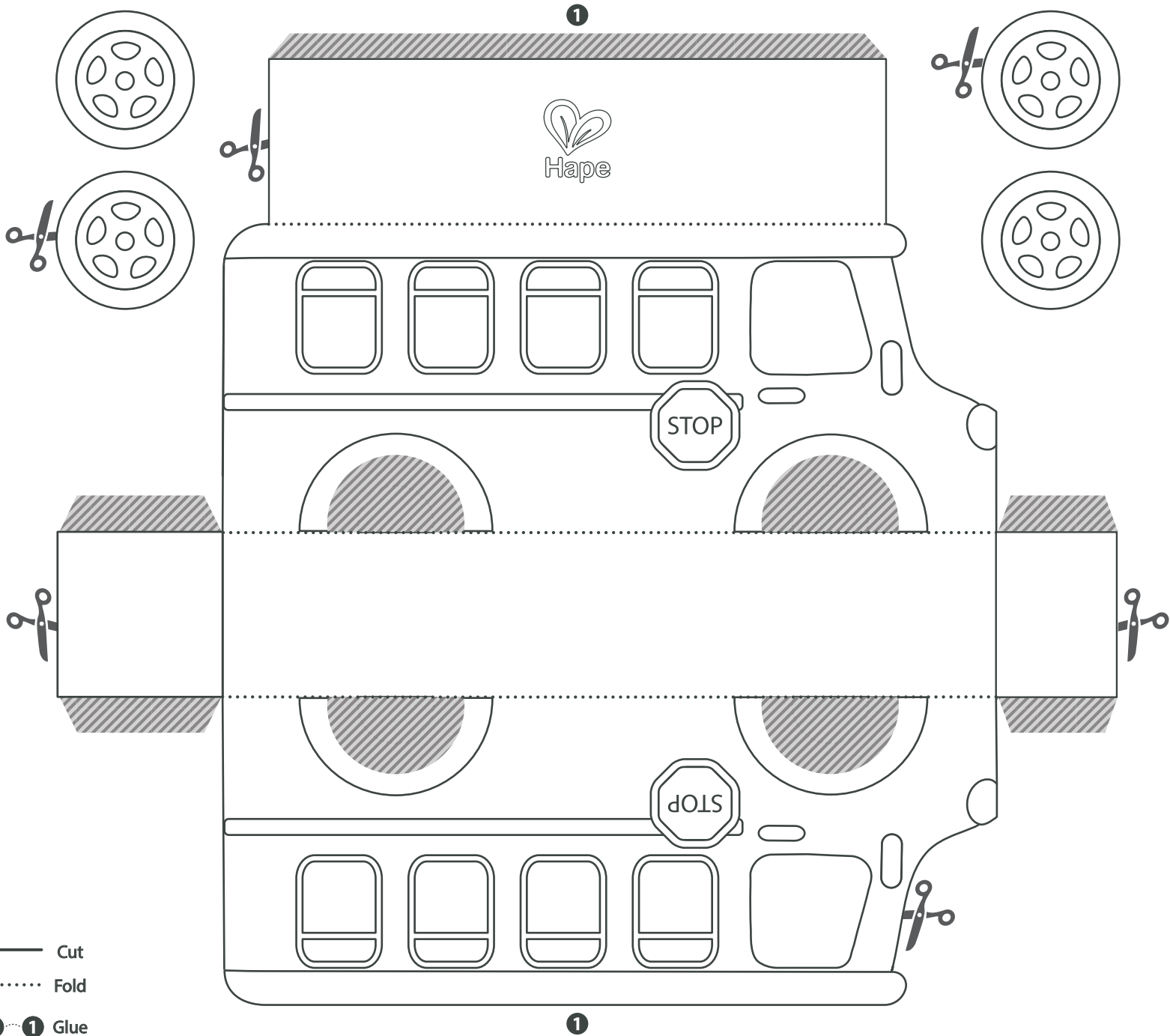


— Cut

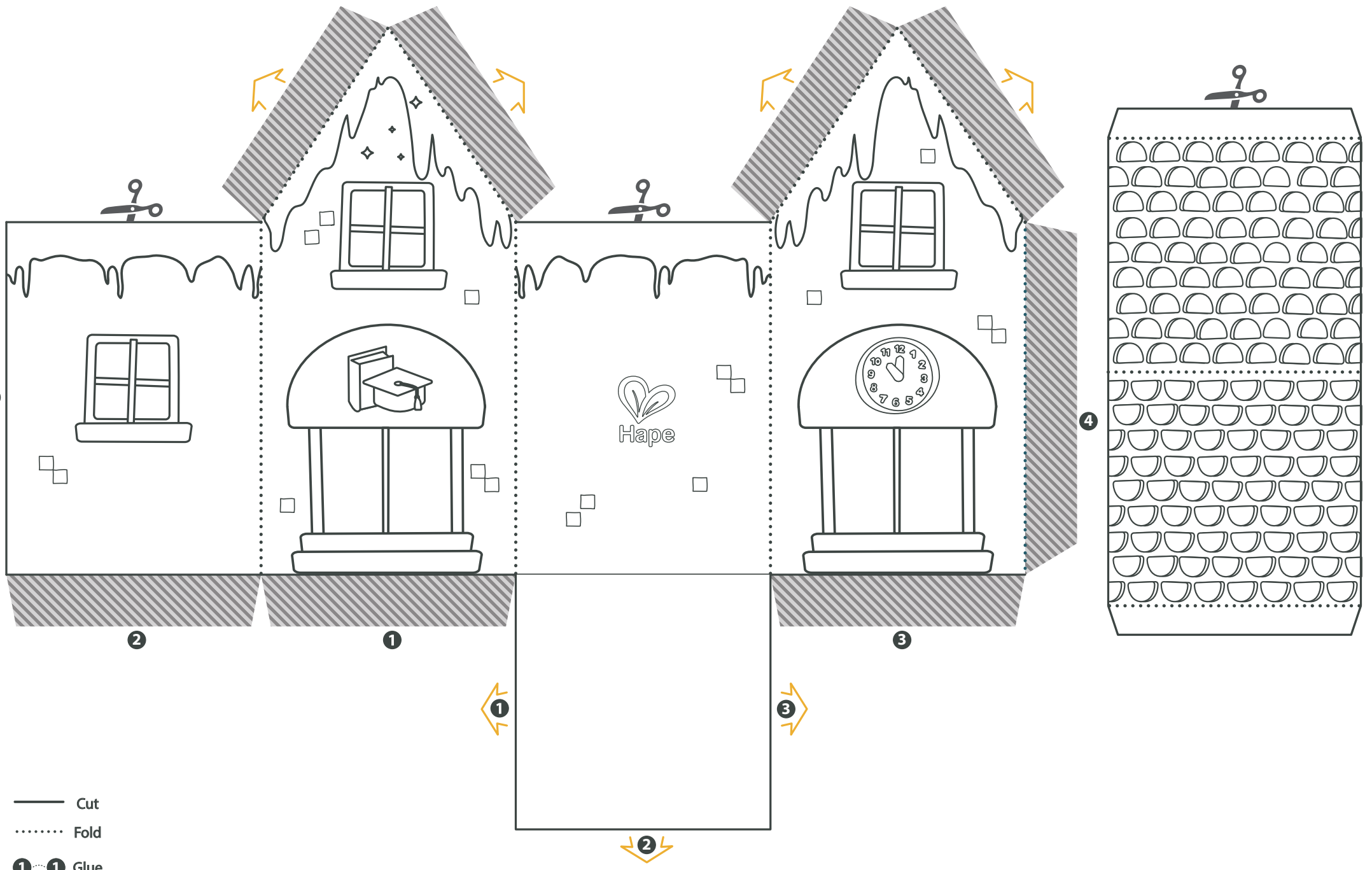


-  Cut
-  Fold
- 1**  **1** Glue
-  Glue

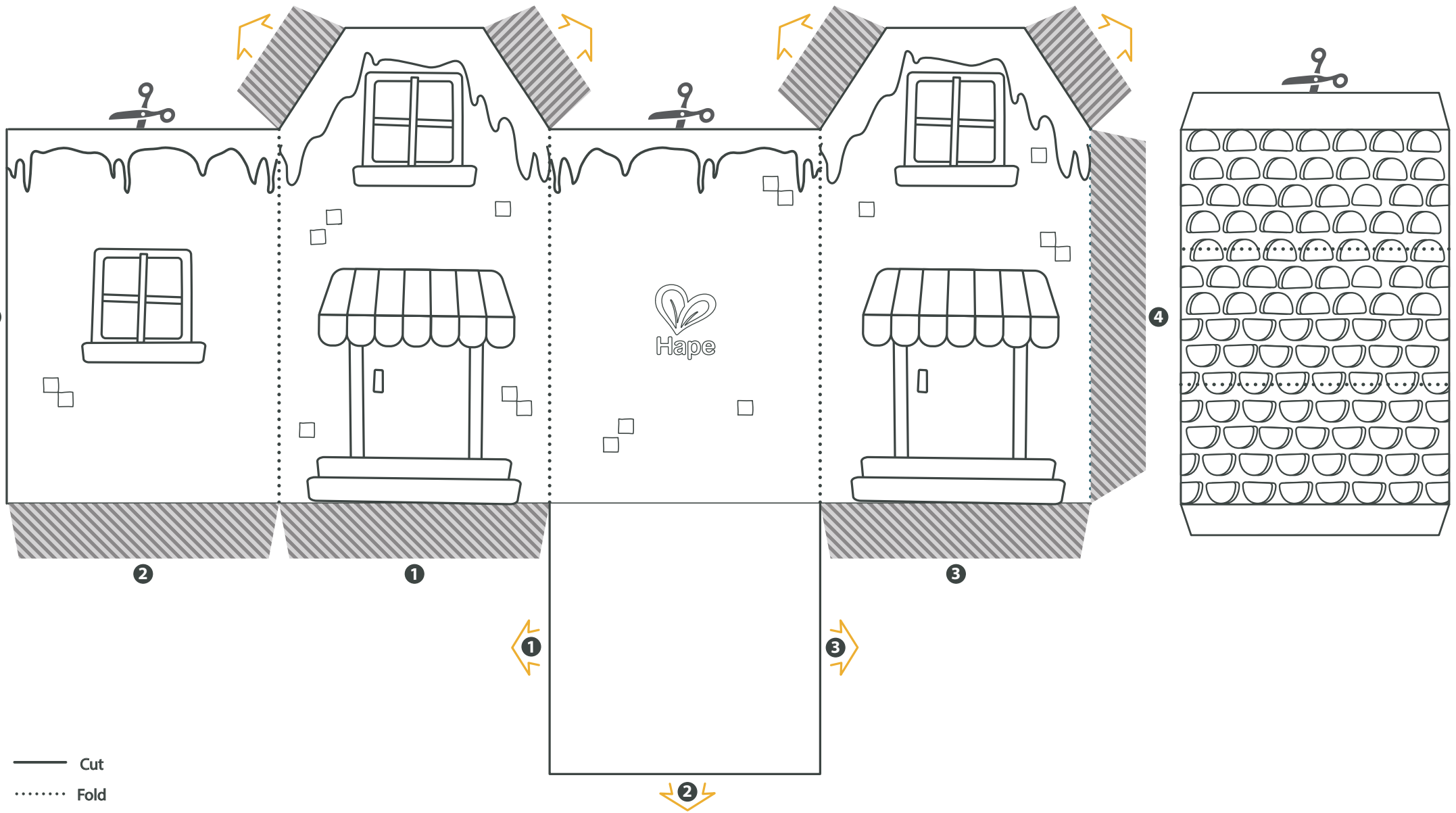




- Cut
- Fold
- ①.....① Glue
- ▨ Glue



- Cut
- Fold
- ①.....① Glue
- ▨ Glue



- Cut
- Fold
- ①.....① Glue
- ▨ Glue

Instructions:

1. Print 2 of each of the roads on pages 1 and 2, cut them out and glue all 4 parts together as shown on page.
2. Print all parts on pages 3-6.
3. Carefully cut them out.
4. Colour and fold in the indicated places, then glue along the shaded line.
Finally build your town as you please and play!