



“This is Me” Personality Cube

Personalise each face on the cube to show everyone who you are.

Share your masterpiece by tagging us:



hapeUK



hape_uk

3-6
years



Learning Benefits



Creative development



Fine motor skills



Problem solving

You will need:



Scissors



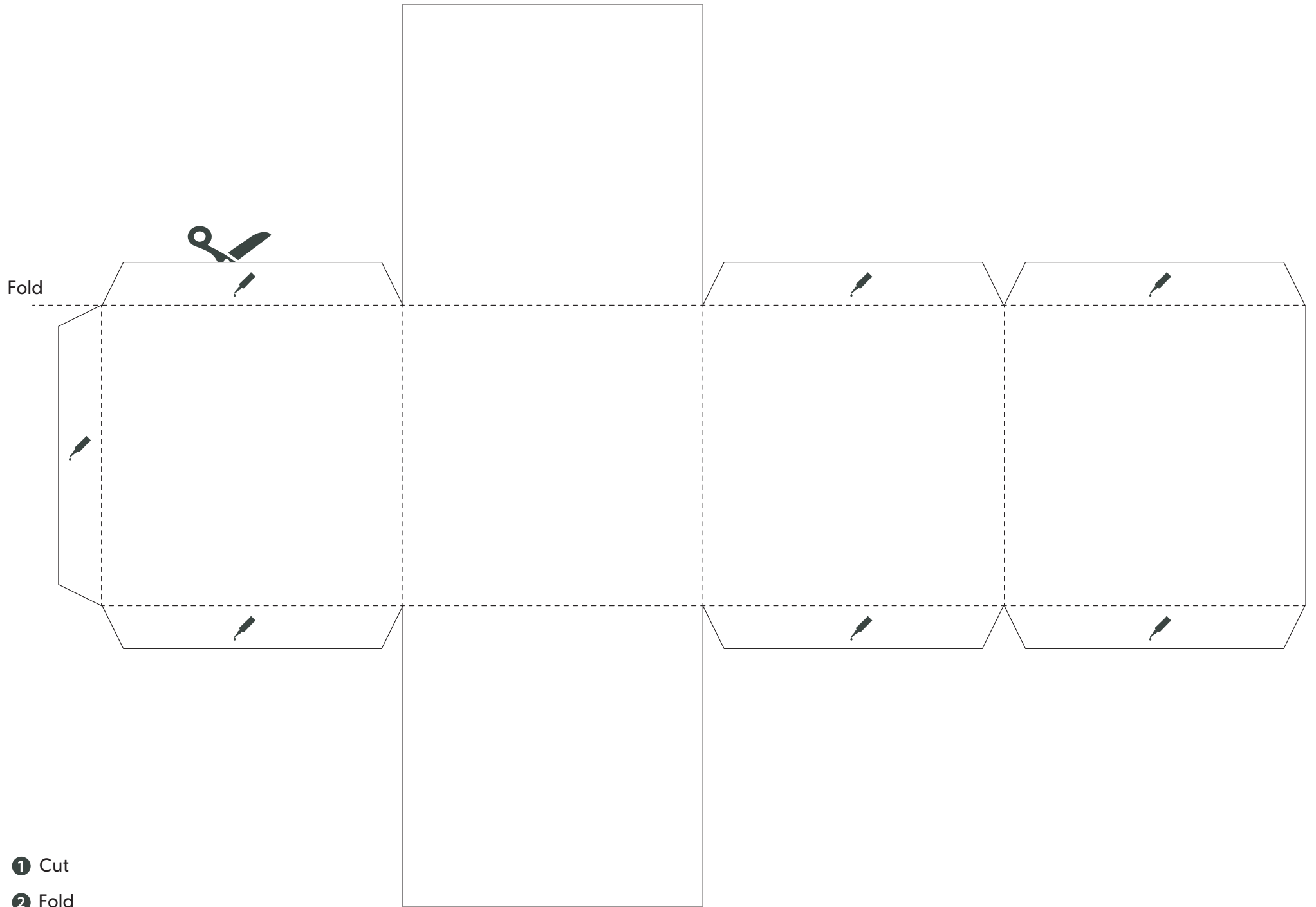
Glue



Colouring Pencils



1h 30min



1 Cut

2 Fold

This summer I met



This is me



My favorite animal is

Me with my best friend



I love



I love playing with







Instructions:

1. Print out the net and cut it out
2. Personalise each square, you can draw write and colour!
3. Cut out each square and glue them onto the cube
4. Fold up to create your personality cube!

