



## Costruisci i tuoi amici delle feste

Piega, incolla e taglia i tuoi personaggi natalizi:  
l'elfo e Babbo Natale!

Condividi il tuo capolavoro  
taggandoci:



Benefici dell'apprendimento



Creatività



Abilità fino-  
motorie



Competenze  
linguistiche



Competenze  
sociali

4-10  
anni



È necessario:



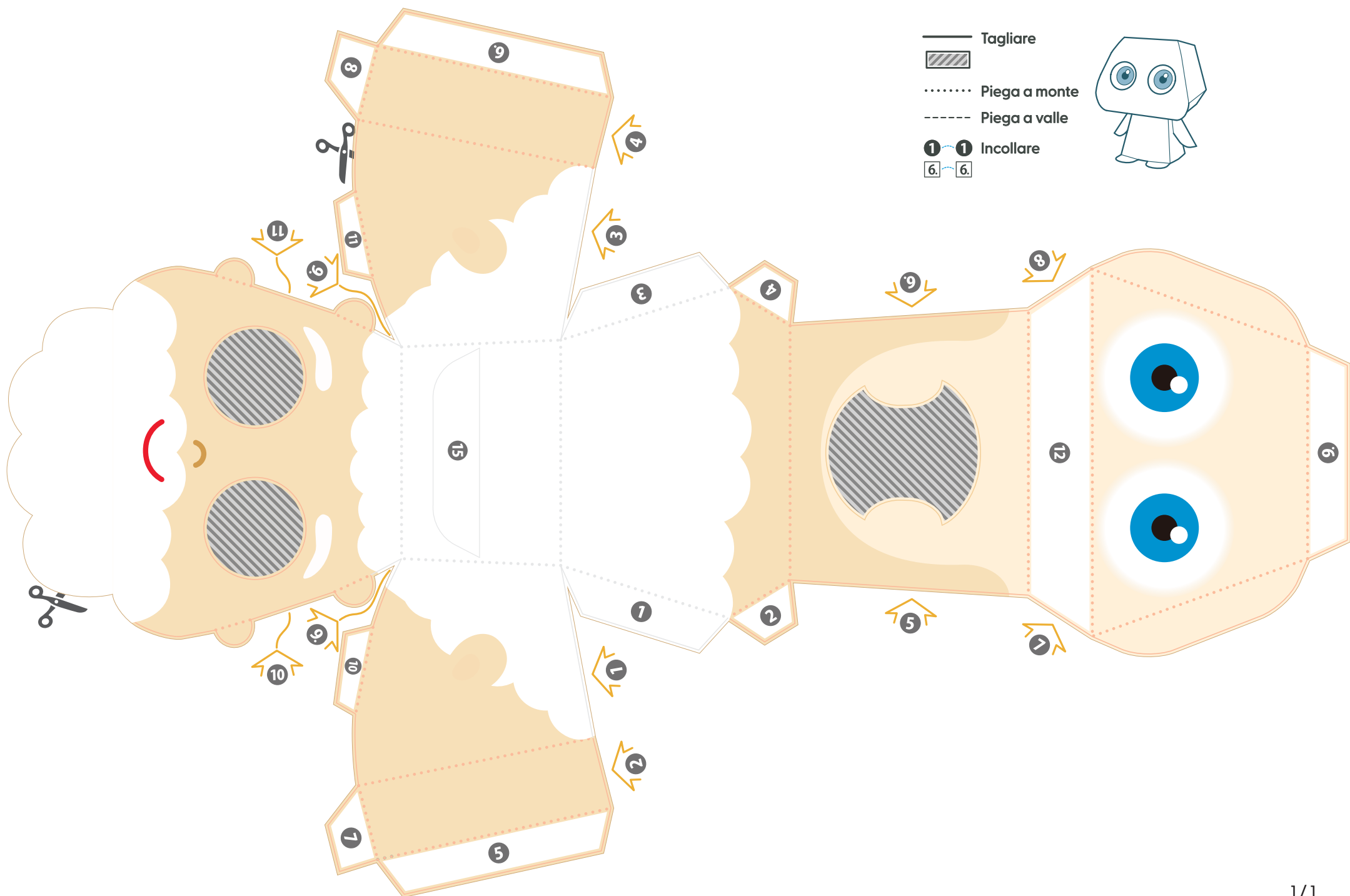
Forbici

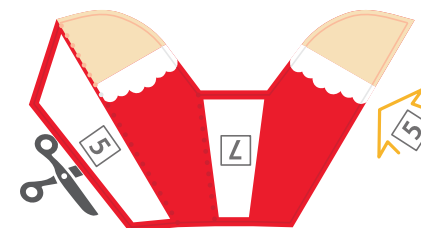
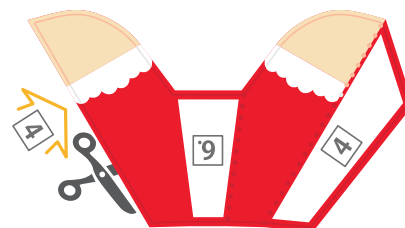
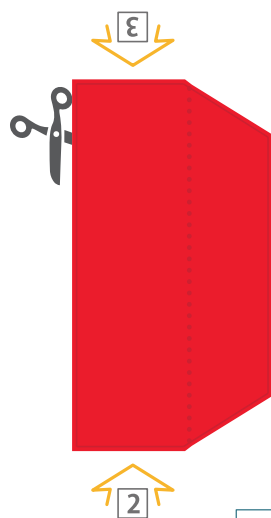
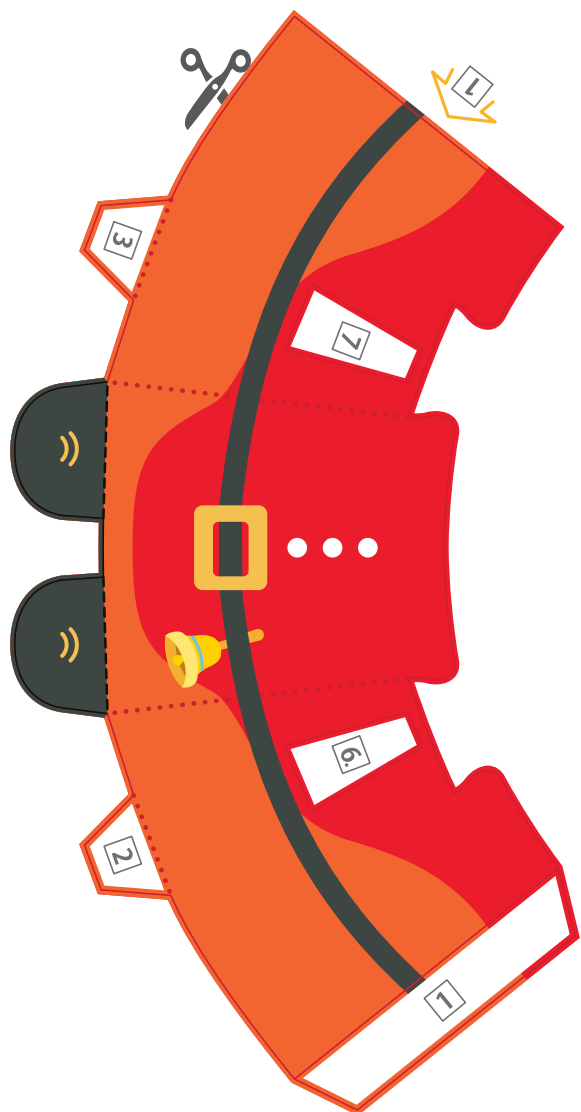


Colla



1h 30min





— Tagliare

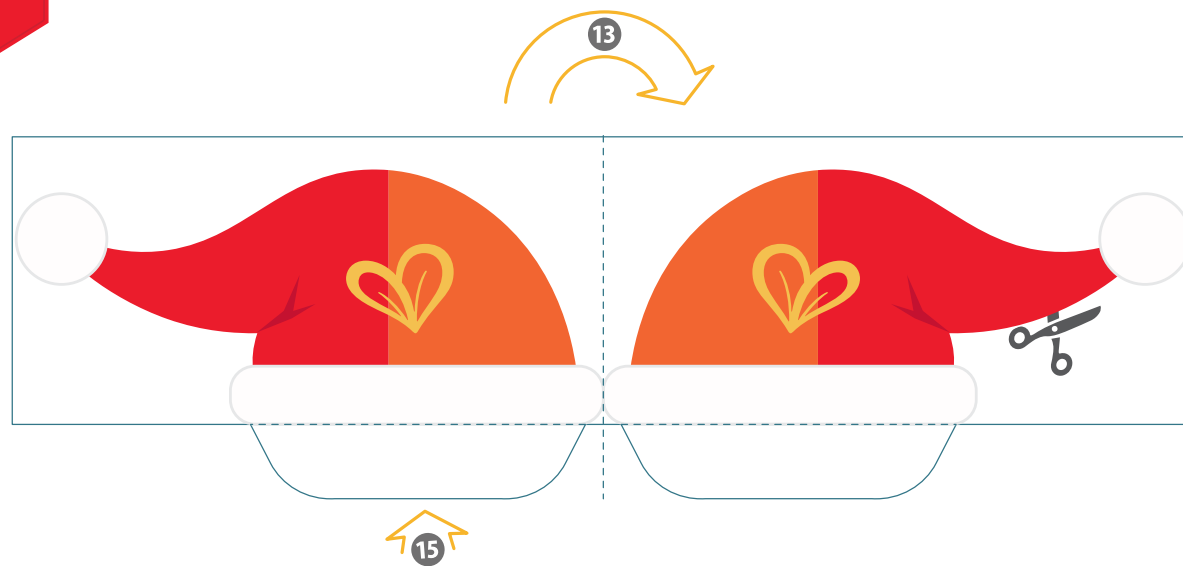
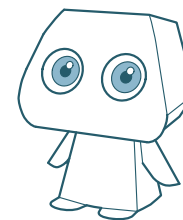


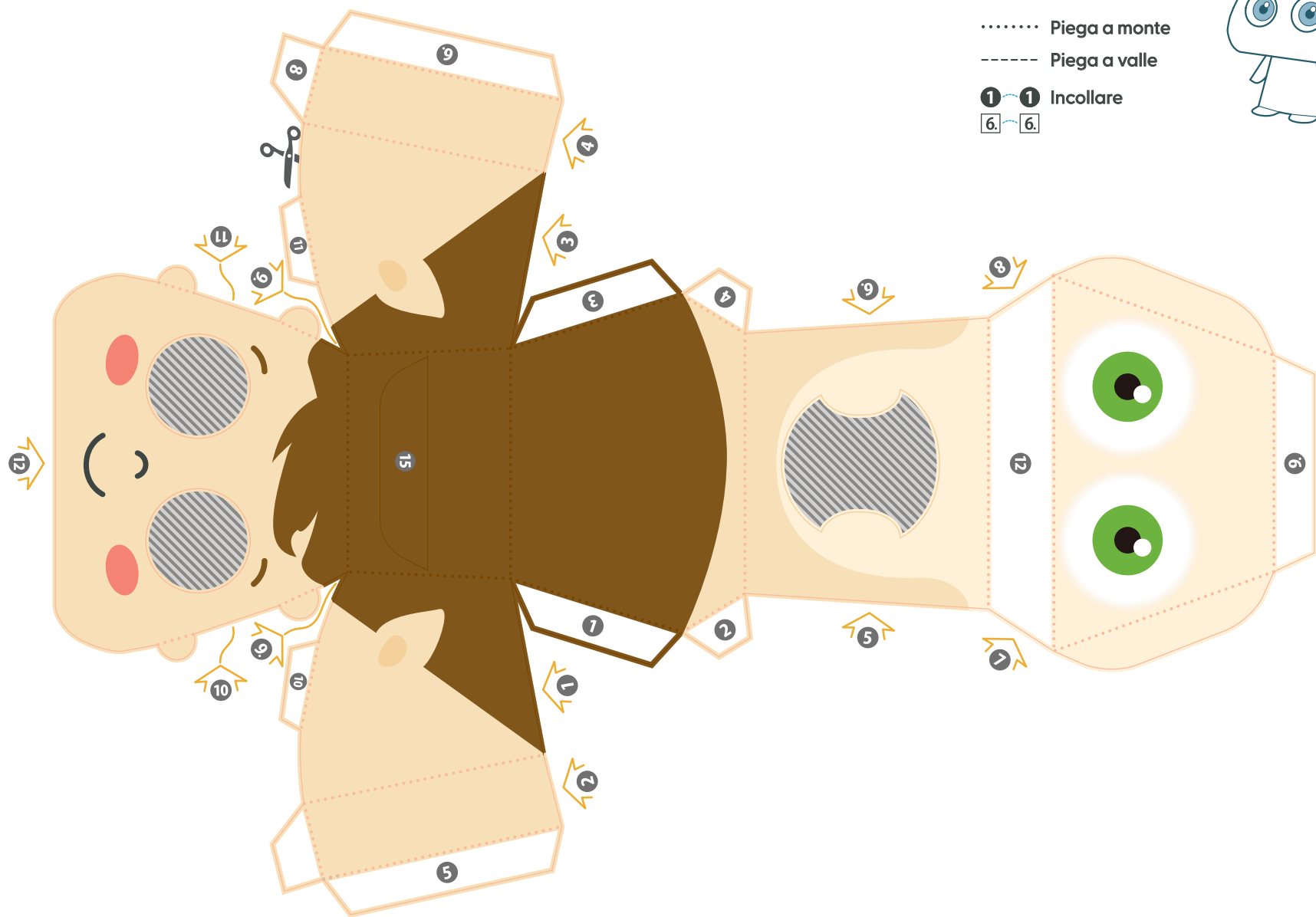
..... Piega a monte

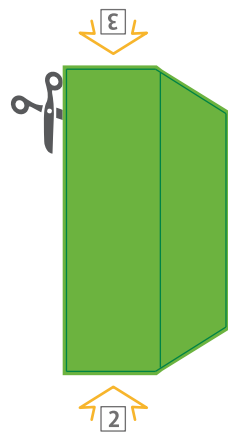
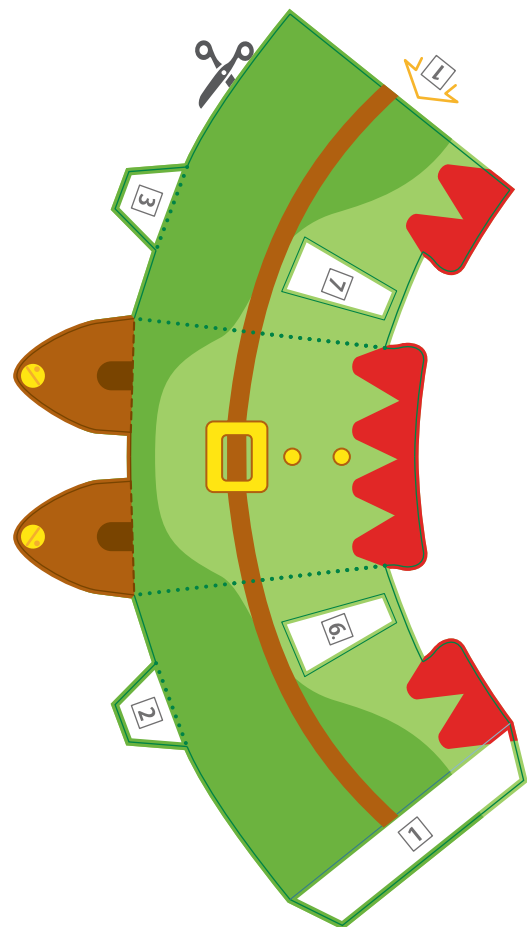
----- Piega a valle

① ① Incollare

⑥ ⑥







— Tagliare

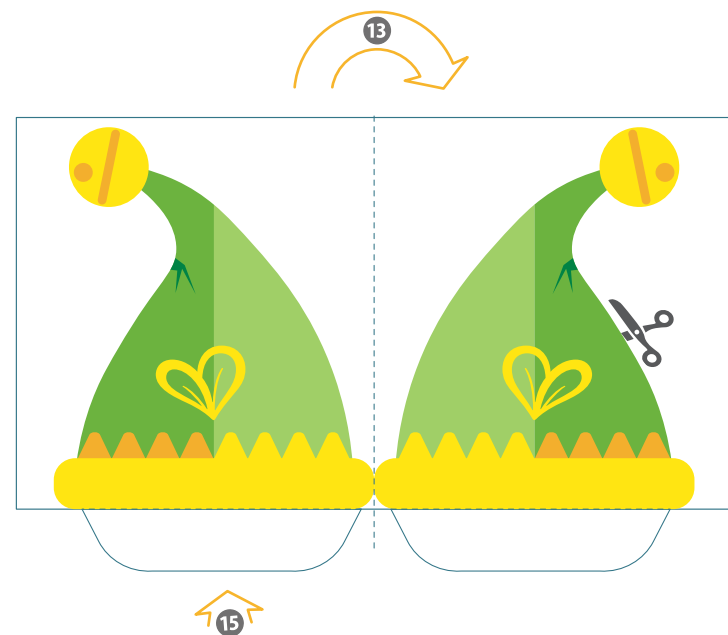
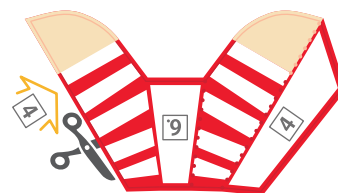
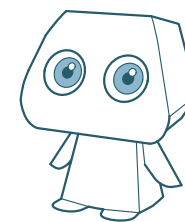


..... Piega a monte

----- Piega a valle

① ① Incollare

⑥ ⑥



 **Tagliare**     
 ..... **Piegare a monte**     
 1 1 **Incollare**  
     
 ----- **Piegare a valle**     
 6. 6.

Istruzioni:

1. Ritaglia con cura ogni personaggio usando le forbici.
2. Per piegare e segnare in modo uniforme, utilizza una penna scarica o un altro strumento a punta.
3. Piegare tutte le parti verso l'alto (piega a valle) o verso il basso (piega a monte), seguendo le indicazioni.
4. Assembla come indicato e incolla dove necessario.

